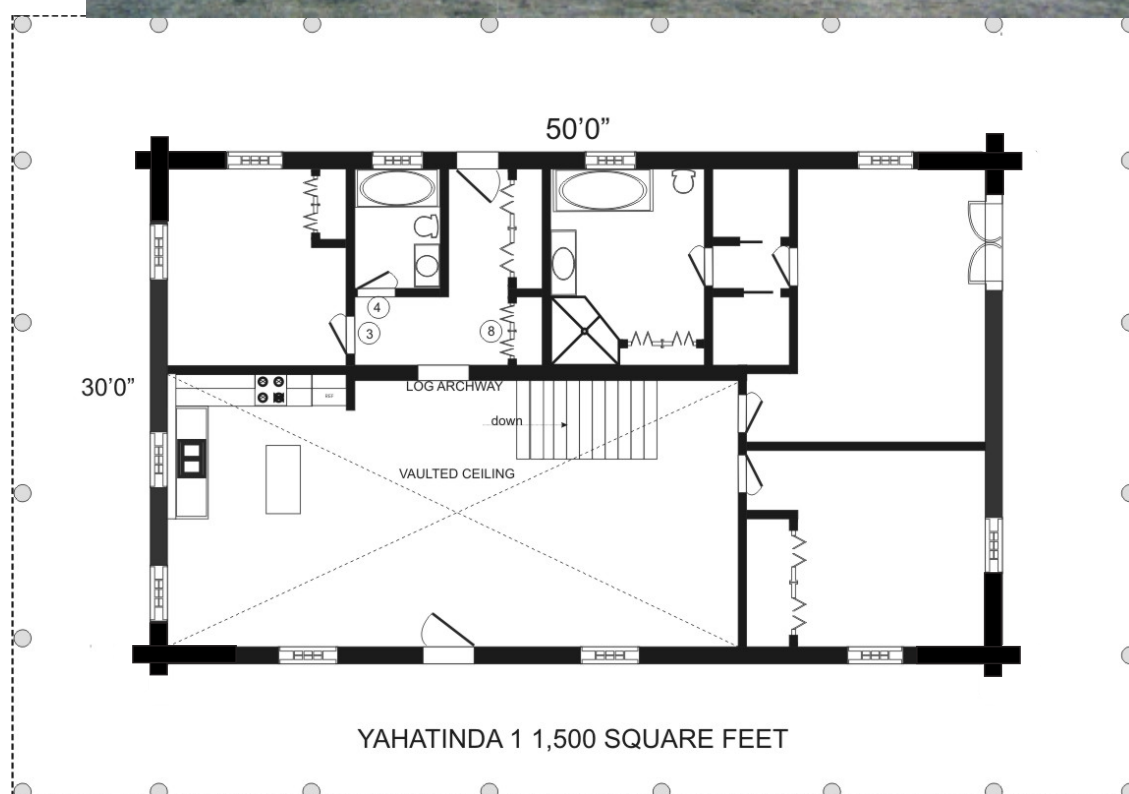


THE YAHATINDA

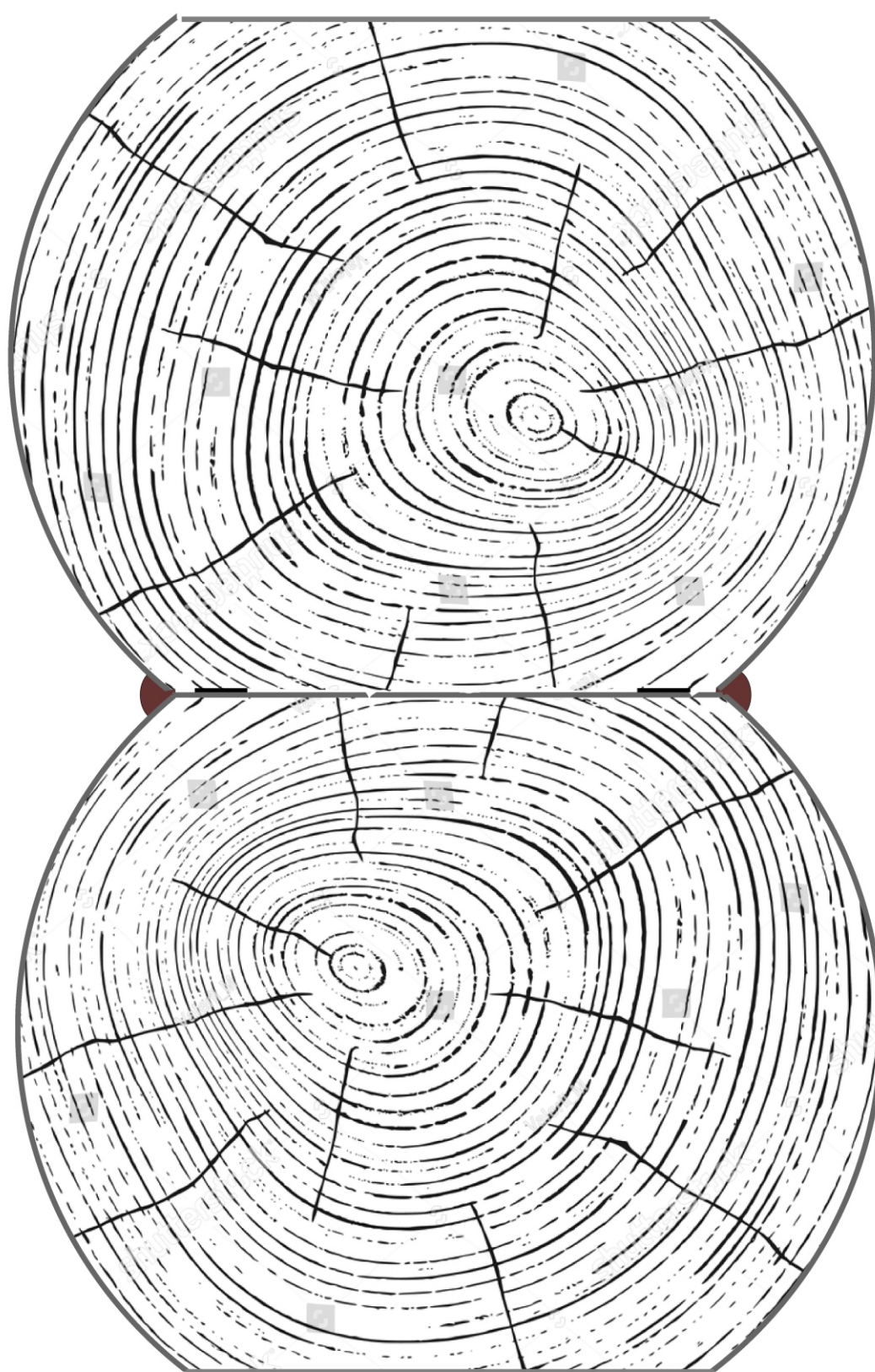


The Yahatinda was built in the foothills of the Rockies for a young ranching family. As you may have surmised by the covered verandas and their very active ranching life style they don't spend a lot of time indoors. The 30 x 50 floor plan could be customized to suit your family's needs.

log wall material package 12x14 logs, for butt and pass corners plus veranda beams and log posts

44,000

ACADIAN LOG HOMES email sales@albertaloghomes.com 780 785 8600



**MASSIVE 14 INCH THICK LOGS
WITH A STACK HEIGHT OF 12 INCHES
AND A 7 INCH FLAT FOR GREAT WARMTH**